

Social Distance Floor Markers

Protect **YOURSELF** and **OTHERS!**



- Floor signs designed to highlight and encourage social distancing and queue lines
- Tough and durable – made to withstand busy industrial and commercial environments
- Each sign is 235mm in diameter
- Highly visible with clear instruction
- Created to help industries comply with the Coronavirus / Covid-19 regulations

Help people to stay safe - and keep two metres apart in public queues and workplaces - with these floor markers designed to help combat the spread of Coronavirus.

Premium quality floor markers with an anti-slip laminate surface tested to R9 standard. Each of these highly visible floor signs are printed onto the underside of a clear PVC film and then laminated on the back surface with an aggressive permanent adhesive. They are suitable for use on dry, flat, clean surfaces. Designed to encourage social distancing and to also create 'wait behind this line' instructions.

Available in **5** social distance marker designs - **text and symbol-only**



SDM01



SDM02



SDM03



SDM04



SDM05

If you require a different language or text on any of the social distance floor markers, we can create a bespoke design suitable for you.

Social Distance Floor Markers



| Ref | Description |
|-------|----------------------------------|
| SDM01 | Keep Your Distance |
| SDM02 | Keep Your Distance - Symbol-only |
| SDM03 | Please Keep a 2M Safe Distance |
| SDM04 | 2M Safe Distance - Symbol-only |
| SDM05 | Thank You For Social Distancing |

Ideal for retailers, banks, supermarkets, post offices, fast food outlets, hospitals, pharmacies and many more...

What is different about our floor markers?

They are built to last!

Premium quality with an aggressive adhesive and anti-slip laminate surface tested to **R9 standard**



- ✓ Industrial quality
- ✓ Aggressive, permanent adhesive
- ✓ Once stuck down, they stay down!
- ✓ Slip resistant
- ✓ Trip resistant
- ✓ Highly visible
- ✓ Durable and long lasting
- ✓ Cost-effective
- ✓ Clearly highlights warnings/hazards
- ✓ Helps prevent accidents

Social Distance Floor Markers



RICHARDSONS
MAKING WORKSPACE WORK

6 Collingwood Court
Riverside Park
Middlesbrough TS2 1RP

Tel: 01642 242228 | Fax: 01642 242259
www.richardsonsuk.co.uk | sales@richardsonsuk.co.uk

Highlight the
safe route
in your
workplace



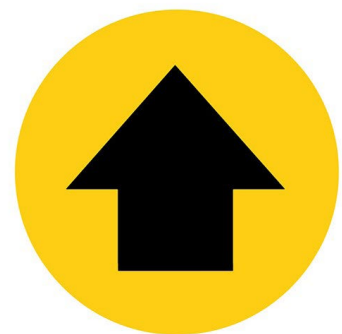
Floor markers and one-way systems down aisles are being introduced in stores and warehouses to help combat and slow the spread of Covid-19.

These visually communicative arrow floor markers can be used near entrances or exits, checkouts or down aisles. This system can help indicate the direction of traffic flow and point your customers in the right direction in a bid to limit the amount of people in an aisle at one time or even make shoppers aware of no-go areas.

Available in a text and symbol-only design.

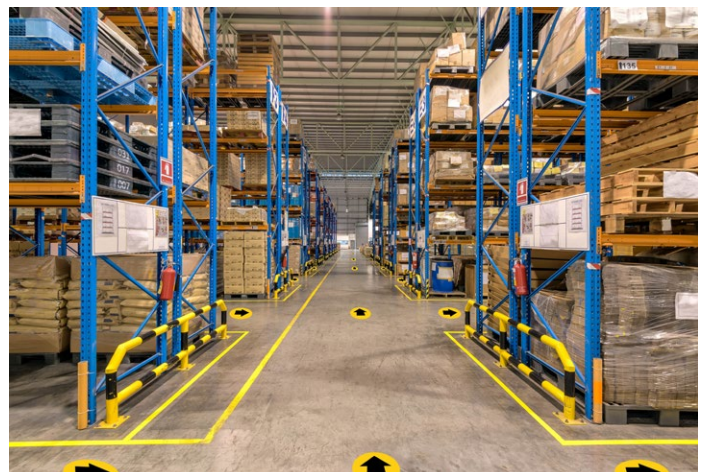


SDM06



SDM07

- Point employees and customers in the right direction
- 235mm in diameter
- Ideal for one way systems in retailers, banks, supermarkets, post offices, fast food outlets, warehouses, hospitals and pharmacies



Ref

Description

| | |
|-------|--------------------------|
| SDM06 | Arrow Safe Route One Way |
| SDM07 | Arrow - Symbol-only |

COVID-19 Floor Marking Kits



Combat
Covid-19 with
these floor
marking kits

- 10 Covid-19 floor marking kits to choose from
- Industrial strength floor products
- Choose from text or symbol-only social distance floor marker

A range of different floor marking kits to help you combat Covid-19 and maintain social distancing in public queues and workplaces. Designed to help people stay safe.

KIT 1a



SDKIT1A - 5 floor markers with text,
1 roll of lane marking tape, 5 pairs of feet.

KIT 1b



SDKIT1B - 5 symbol-only floor markers,
1 roll of lane marking tape, 5 pairs of feet.

Please go to the next page to see more of the **Covid-19 Kits** that are available



KIT 2a



SDKIT2A - 5 floor markers with text, 1 roll of lane marking tape, 5 pairs of feet, 10 corner signals.

KIT 2b



SDKIT2B - 5 symbol-only floor markers, 1 roll of lane marking tape, 5 pairs of feet, 10 corner signals.

KIT 3a



SDKIT3A - 5 floor markers with text, 1 roll of lane marking tape, 5 pairs of feet, 10 corner signals, 5 self-adhesive A5 vertical frames4docs®, 5 handwashing cards.

KIT 3b



SDKIT3B - 5 symbol-only floor markers, 1 roll of lane marking tape, 5 pairs of feet, 10 corner signals, 5 self-adhesive A5 vertical frames4docs®, 5 handwashing cards.

Please note:

Social distance floor markers are only supplied as shown *(in red)*.

Yellow will be supplied as standard for the other products.

However other colours are available, please contact the sales office.

Please go to the next page to see more of the **Covid-19 Kits** that are available



COVID-19 Floor Marking Kits

KIT 4a



SDKIT4A - 5 floor markers with text, 1 roll of lane marking tape, 5 pairs of feet, 10 corner signals, 5 magnetic A5 vertical frames4docs®.

KIT 4b



SDKIT4B - 5 symbol-only floor markers, 1 roll of lane marking tape, 5 pairs of feet, 10 corner signals, 5 magnetic A5 vertical frames4docs®.

KIT 5a



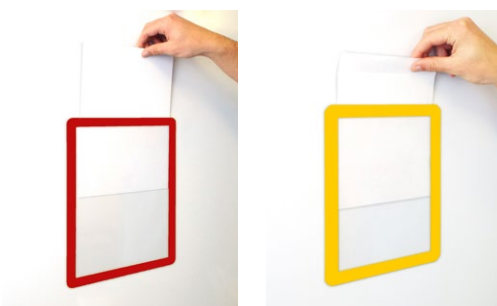
SDKIT5A - 5 floor markers with text, 1 roll of lane marking tape, 5 pairs of feet, 10 corner signals, a pack of 10 A4 vertical frames4windows®.

KIT 5b



SDKIT5B - 5 symbol-only floor markers, 1 roll of lane marking tape, 5 pairs of feet, 10 corner signals, a pack of 10 A4 vertical frames4windows®.

frames4docs®



frames4windows®



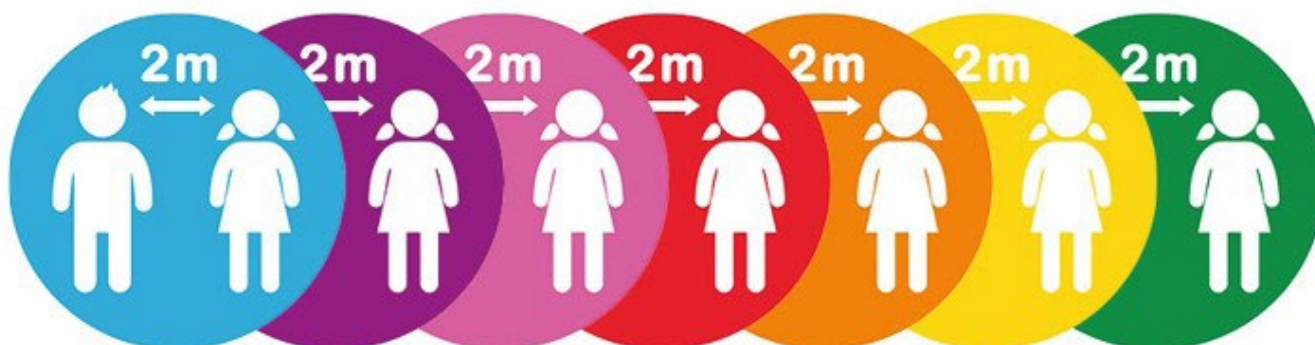
A range of inserts for the frames are included in Kits 3, 4 and 5. However, your own inserts can be used.

School Social Distance Floor Markers

SDM08



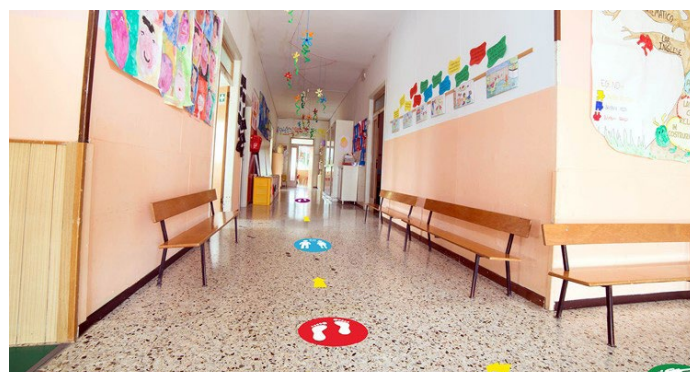
SDM09



Help prepare schools to keep teachers and children safe with our range of premium quality floor markers. Ideal for school hallways, classrooms, libraries, canteens and receptions.

Available in 7 different colours, these industrial quality, anti-slip floor products are ideal for highlighting and marking out areas on the school floors. They will stand the test of time as they are highly durable with a strong aggressive adhesive to stop them peeling or lifting. With our range of highly visible and colourful social distance floor markers, you have the flexibility to create your very own visual but cost-effective system to suit your school.

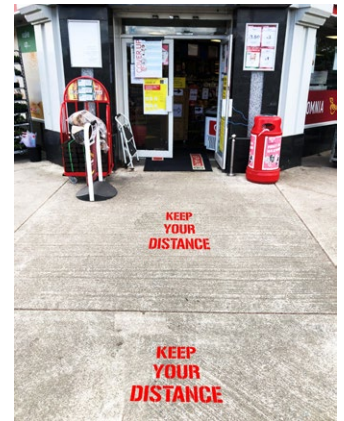
- Prepare to make schools safe
- Encourage children and young adults to maintain social distancing
- Premium quality and highly durable floor markers
- Each sign is 235mm in diameter
- Highly visible and colourful to highlight hazards
- Long lasting but cost-effective solution



| Ref | Description |
|-------|-------------------------------------|
| SDM08 | School Marker - Feet Symbol |
| SDM09 | School Marker - Keep 2 Metres Apart |

Please state which colour you require - (/BL) Blue, (/PU) Purple, (/PI) Pink, (/RE) Red, (/OR) Orange, (/YE) Yellow or (/GR) Green.

Social Distance Stencil Kits



- Easy to use social distance floor stencils
- Choose from 4 stencil kits
- Each stencil is 400mm x 500mm overall
- Reusable and long lasting
- Cost-effective way to practice social distancing
- Easily measure out 2 metres with the flexible social distance ruler
- 3 different paint colours - red, yellow, white
- Ideal for external areas

Highly visible floor stencil kits to easily and clearly highlight social distancing in external areas. Help keep people two metres apart in outside public queues and workplaces.

Each kit is available with 1 stencil, 1 ruler, 2 cans of paint and a hand held applicator. Choose from 4 different stencils and 3 different paint colours - red, yellow or white. Dimensions of the stencils are 400mm x 500mm overall.

Ideal for outside retailers, supermarkets, post offices, banks, pharmacies, public parks, bus stops and many more...

KIT 1



STVKIT01 - 1 stencil, 1 ruler, 2 cans of paint and a hand held applicator

KIT 2



STVKIT02 - 1 stencil, 1 ruler, 2 cans of paint and a hand held applicator

KIT 3



STVKIT03 - 1 stencil, 1 ruler, 2 cans of paint and a hand held applicator

KIT 4



STVKIT04 - 1 stencil, 1 ruler, 2 cans of paint and a hand held applicator



With each kit please state which colour paint you require -
(/RE) Red, (/YE) Yellow or (/WH) White.



Floor Signals



RICHARDSONS
MAKING WORKSPACE WORK

6 Collingwood Court
Riverside Park
Middlesbrough TS2 1RP

Tel: 01642 242228 | Fax: 01642 242259
www.richardsonsuk.co.uk | sales@richardsonsuk.co.uk

For **walkways**,
pallet storage,
and **equipment**
positioning

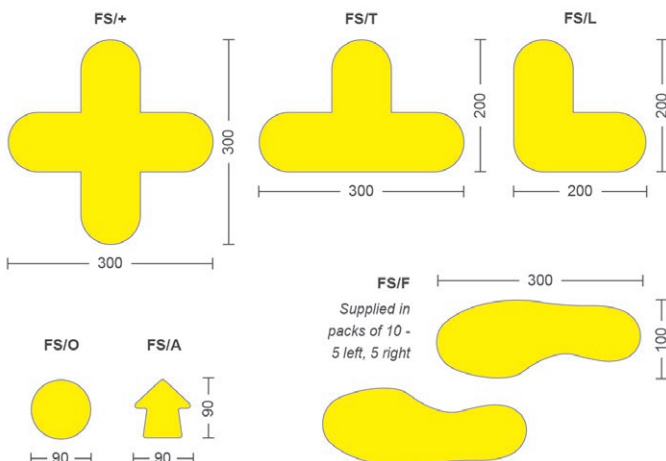


- A simple but effective solution for marking areas on the floor
- Tough PVC with an aggressive adhesive
- Capable of withstanding everyday traffic in busy commercial and industrial environments
- Helps to improve efficiency and safety

Highlight pallet areas, walkways and traffic flow. Manufactured using a thin plastic membrane and laminated with an aggressive adhesive.

These floor signals bond strongly onto the floor surface and are resistant to the rigours of a busy warehouse and other areas with high footfall. The markers are suitable for application onto any clean, flat, sealed surface.

Available in **6 shape options** and **6 colours**



| Ref | Shape | Size (mm h x w) | Pack | Colour |
|--------|-------|-----------------|-------------------------|-------------|
| FS/+ | + | 300 x 300 | 10 | All colours |
| FS+/50 | + | | 50 | All colours |
| FS/T | T | 200 x 300 | 10 | All colours |
| FST/50 | T | | 50 | All colours |
| FS/L | L | 200 x 200 | 10 | All colours |
| FSL/50 | L | | 50 | All colours |
| FS/O | O | 90mm Diameter | 100 | All colours |
| FS/A | A | 90 x 90 | 100 | All colours |
| FS/F | F | 300 x 100 | 10 5 left/ 5 right | All colours |
| FSF/50 | F | | 50 25 left/ 25 right | All colours |

Lane Marking Tapes

**50mm
wide**



**75mm
wide**

Black/Yellow Highlights general hazzard areas
Red/White Highlights fire protection equipment
Green/White Highlights medical/safety equipment



- Tough, durable self-adhesive tapes
- Highlights hazzards or restricted areas
- High visibility demarcation
- Available in 50mm or 75mm wide

The lane marking tapes can be used to mark stairways, colour code walkways, workstations or storage areas within stores and warehouses.

| Ref | Size (h x w) | Pack | Colour |
|---------|--------------|------|--------------|
| LMT/B | 50mm x 33M | 1 | Blue |
| LMT/G | 50mm x 33M | 1 | Green |
| LMT/R | 50mm x 33M | 1 | Red |
| LMT/W | 50mm x 33M | 1 | White |
| LMT/Y | 50mm x 33M | 1 | Yellow |
| LMT/BY | 50mm x 33M | 1 | Black/Yellow |
| LMT/GW | 50mm x 33M | 1 | Green/White |
| LMT/RW | 50mm x 33M | 1 | Red/White |
| LMT75/G | 75mm x 33M | 1 | Green |
| LMT75/R | 75mm x 33M | 1 | Red |
| LMT75/W | 75mm x 33M | 1 | White |
| LMT75/Y | 75mm x 33M | 1 | Yellow |

Floor Graphic Markers

Ideal for
*one way
systems*



FM01



FM02



FM20



FM24



FM38

- High visibility floor graphic signs
- Available with text and symbol-only designs
- Helps indicate the direction of traffic flow
- Large 430mm diameter
- Highlights warnings or special requirements

A range of eye-catching, highly visible floor signs which will highlight warnings or special requirements. Printed on the underside of a tough clear plastic film and laminated with an aggressive adhesive means that these signs can be used in busy industrial and commercial environments. Available from stock with 35 standard designs. However, bespoke signs can also be produced when required.

Premium quality floor markers with an **aggressive adhesive** withstands the busiest of environments

More designs available - please contact us for more details

| Ref | Size (diameter) |
|-------------|-----------------|
| FM01 - FM38 | 430mm |

Specials available upon request

If you don't see a design suitable for your requirements, we can manufacture to your own design.

Simply contact the sales office.



Half Circle Floor Graphic Markers



Available in 20 design options -
12 text and 8 symbol-only designs



- Large 750mm wide x 375mm deep floor markers
- Ultra-low (0.45mm thick) helps prevent pallets catching the edge
- Super strong adhesive quality - suitable for use in busy workplace environments
- Slip-resistance tested to R9 standard
- Highlights the area to keep clear in front of fire doors to ensure safety

These large anti-slip floor markers can be used on any flat, sealed surface. Ideal for use in front of fire exit doors, to highlight fire extinguisher areas or to warn/highlight any important messaging. The slimline markers feature an aggressive, permanent adhesive suitable for busy industrial environments.



Highlight
waste recycling
areas in the
warehouse

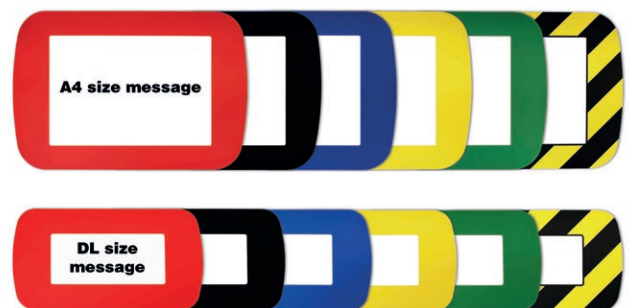


| Ref | Size |
|-----------------|------------|
| FHMC01 - FHMC20 | 750mm Wide |

Specials available upon request

If you don't see a design suitable for your requirements, we can manufacture to your own design.

Simply contact the sales office.



- Flat, colour coded floor identification frames
- Available in 2 insert sizes: A4 and DL
- Choice of 6 stand out colours
- Permanent industrial strength adhesive to withstand warehouse traffic
- Ideal for identifying bulk stack locations or to highlight important information

Tough, permanent adhesive colour edged PVC frames that enable a printed message or code to be placed and protected onto the floor. The frames bond onto the floor surface and are therefore resistant to the rigours of a busy workplace.

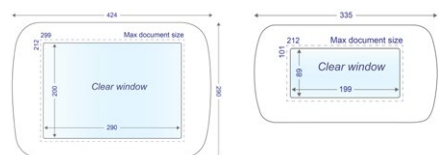
The frames are available with two window sizes: A4 (up to 200 x 290mm) or DL (up to 89 x 199mm). Frames are available with six colour options, making them ideal for 5S and Lean environments.

Available in 5 standard colours or chevron



A4 frames4floors®

| Ref | Size of insert (mm h x w) | Colour | Pack |
|--|---------------------------|--------------|------|
| FF4B/10 | 200 x 290 | Blue | 10 |
| FF4BK/10 | 200 x 290 | Black | 10 |
| FF4G/10 | 200 x 290 | Green | 10 |
| FF4R/10 | 200 x 290 | Red | 10 |
| FF4Y/10 | 200 x 290 | Yellow | 10 |
| FF4MIX/10 | 200 x 290 | Mixed | 10 |
| 2 of each of the above, not including Black & Yellow | | | |
| FF4BY/10 | 200 x 290 | Black/Yellow | 10 |



DL frames4floors®

| Ref | Size of insert (mm h x w) | Colour | Pack |
|--|---------------------------|--------------|------|
| FFDLB/10 | 89 x 199 | Blue | 10 |
| FFDLBK/10 | 89 x 199 | Black | 10 |
| FFDLG/10 | 89 x 199 | Green | 10 |
| FFDLR/10 | 89 x 199 | Red | 10 |
| FFDLY/10 | 89 x 199 | Yellow | 10 |
| FFDLMIX/10 | 89 x 199 | Mixed | 10 |
| 2 of each of the above, not including Black & Yellow | | | |
| FFDLBY/10 | 89 x 199 | Black/Yellow | 10 |

Allows for quick and easy barcode scanning